

REVISIONS				
REV	ECR	DESCRIPTION	DATE	APPROVED
B	6755	CHANGED SLIDER HOLE PATTERN, REDRAWN	5/10/2019	TW

NOTES (UNLESS OTHERWISE SPECIFIED)

1. LINAR SPECIFICATIONS:

LINEAR STROKE: 15 +1/0 mm
ENC. RESOLUTION(+A/-A;+B/-B): 0.5, 1, 5 um
ENCODER REPEATABILITY: ±4 COUNTS
OPERATING VOLTAGE: 48 VDC
COIL RESISTANCE: 15 Ohm @ 22°C
PEAK FORCE: 185 N @ 3.2 A (48 VDC)
CONTINUOUS FORCE: 74 N @ 1.3 A
FORCE CONSTANT: 58 N/A
MOVING MASS: 0.74 kg
TOTAL MASS: 4.3 kg

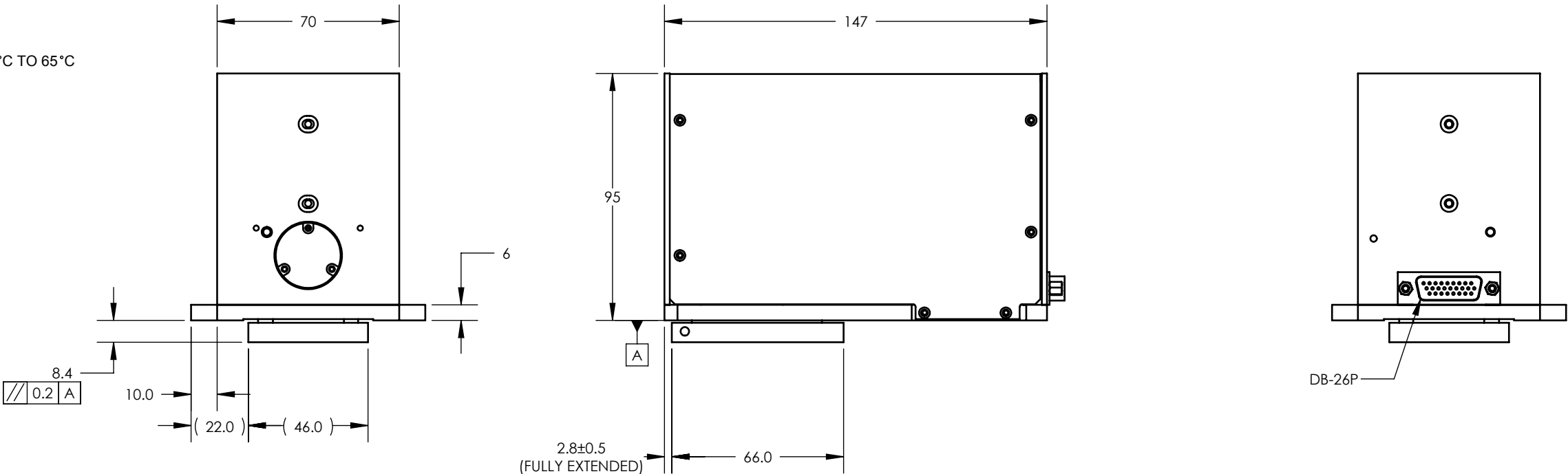
2. VACUUM OPTION: N/A

3. SPRING OPTION: AVAILABLE

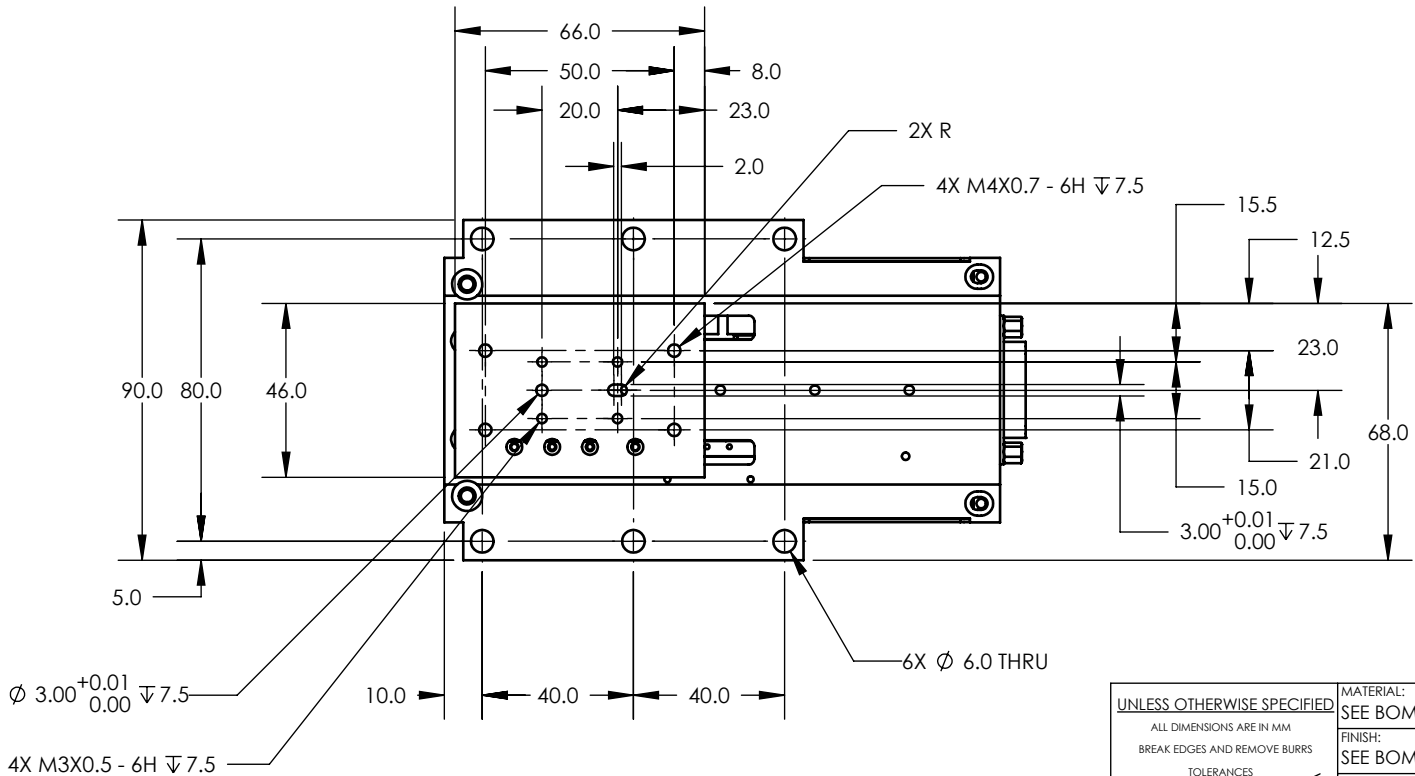
4. OPERATING TEMPERATURE: 0°C TO 65°C

5. TOLERANCES

X.: ±0.5
X.X: 0.25



PIN No	DB-26P
1	(L) PH. A+
2	(L) PH. B+
3	(L) PH. Z+
4	NC
5	NC
6	NC
7	NC
8	NC
9	NC
10	(L) PH. A-
11	(L) PH. B-
12	(L) PH. Z-
13	NC
14	NC
15	NC
16	NC
17	NC
18	NC
19	+5 VDC
20	5V RTN
21	(L) MOTOR+
22	(L) MOTOR+
23	(L) MOTOR-
24	(L) MOTOR-
25	NC
26	NC



UNLESS OTHERWISE SPECIFIED		MATERIAL:		NAME		DATE		SMAC	
ALL DIMENSIONS ARE IN MM		SEE BOM		DWN BY		TW		5807 VAN ALLEN WAY	
BREAK EDGES AND REMOVE BURRS		FINISH:		CHK BY		TMV		CARLSBAD CA, 92008	
TOLERANCES		SEE BOM		ENG APP		TMV		(760) 929-7588	
X.: ±0.5		MACHINE FINISH:		MFG APP				TITLE:	
X.XX: ±0.03		1.6		QA APP				LINEAR SLIDE	
ANGLE: ±0.1°		INTERPRET PER:		PROPRIETARY AND CONFIDENTIAL				SIZE:	
CONCENTRICITY: ±0.025		ASME Y14.5-2009		THE INFORMATION CONTAINED IN THIS DRAWING IS THE SOLE PROPERTY OF SMAC. ANY REPRODUCTION IN PART OR AS A WHOLE WITHOUT THE WRITTEN PERMISSION OF SMAC IS PROHIBITED.		PART NO:		REV:	
ROUNDNESS: ±0.025		THIRD ANGLE PROJECTION				B LAR95-015-7X-2		1	
EDGE BREAKS: 0.2 MAX						SCALE: 1:2		DO NOT SCALE	
ALL DIMENSIONS AND TOLERANCES ARE FINAL								SHEET: 1 / 1	

REF. NUMBER	LAR95-015-2
CONTRACT	STD