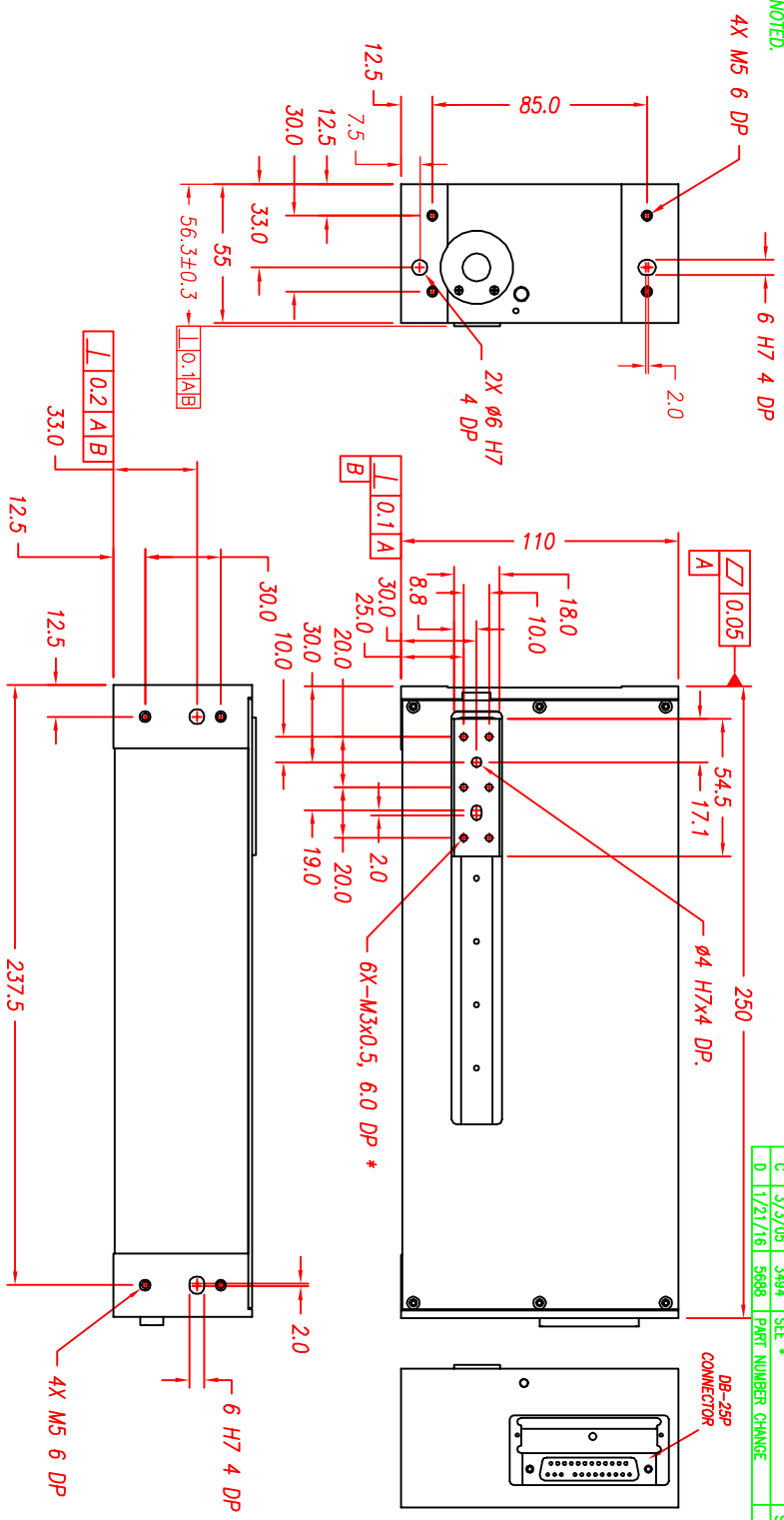


NOTES: (UNLESS OTHERWISE SPECIFIED)

- ALL DIMENSIONS ARE IN MILLIMETER UNLESS OTHERWISE NOTED.
- LINEAR SPECIFICATION:
 LINEAR STROKE: 100.0 +1.0/-0 mm
 FORCE CONSTANT: 13.0 N/AMP
 PEAK FORCE: 16.5 N @ 1.3 AMPS (24 VDC)
 CONTINUOUS FORCE 13.0 N @ 1.0 AMPS (24 VDC)
 COIL DC RESISTANCE: 16.5 OHMS @ 22°C
 COIL INDUCTANCE: 4.3 mH @ 1 kHz
 ENCODER RESOLUTION: 0.5, 1, 5 MICROMETER (NC)
 ENCODER ACCURACY: ±4 Counts
- MOVING MASS: 250 GRAMS
- TOTAL MASS: 3700 GRAMS
- OPERATING TEMPERATURE: -10°C TO +65°C

SIGNATURE NEEDED FOR ORDER APPROVAL
 SIGN _____ DATE _____
 APPROVAL NOT RECEIVED WITHIN
 48 HOURS MAY AFFECT DELIVERY



DB-25P PINOUT

1	+5VDC	14	LINEAR PHASE A+
2	+5V RETURN	15	NO CONNECTION
3	NO CONNECTION	16	LINEAR PHASE B+
4	LINEAR PHASE A-	17	NO CONNECTION
5	NC	18	LINEAR INDEX +
6	LIMIT RETURN	19	COIL -
7	COIL +	20	COIL -
8	COIL +	21	NO CONNECTION
9	LINEAR PHASE B-	22	NO CONNECTION
10	NO CONNECTION	23	LINEAR INDEX -
11	LIMIT +	24	NO CONNECTION
12	LIMIT -	25	NO CONNECTION
13	NO CONNECTION		

<p>FILE NAME: LAS55-100-5</p> <p>TOLERANCES ARE:</p> <table border="1"> <tr><td>X</td><td>±</td><td>0.50</td></tr> <tr><td>X.X</td><td>±</td><td>0.1</td></tr> <tr><td>X.XX</td><td>±</td><td>0.05</td></tr> <tr><td>X.XXX</td><td>±</td><td>0.1</td></tr> <tr><td>ANGULARITY</td><td>±</td><td>0.01</td></tr> <tr><td>CONCENTRIC</td><td>±</td><td>0.05</td></tr> <tr><td>ROUNDNESS</td><td>±</td><td>0.2 MAX</td></tr> <tr><td>EDGE BREAK</td><td></td><td>0.2 MAX</td></tr> <tr><td>CHAMFER</td><td></td><td>0.2 MAX</td></tr> </table>	X	±	0.50	X.X	±	0.1	X.XX	±	0.05	X.XXX	±	0.1	ANGULARITY	±	0.01	CONCENTRIC	±	0.05	ROUNDNESS	±	0.2 MAX	EDGE BREAK		0.2 MAX	CHAMFER		0.2 MAX	<p>MATERIAL: ALUMINUM 6061-T6</p> <p>HEAT TREAT: RC</p> <p>PROTECTIVE FINISH: ELECTROLESS NICKEL</p> <p>EXCEPT NOTED: 1.6</p>	<p>DESIGNED BY: TOM VU</p> <p>DATE: 09/09/02</p> <p>CHECKED BY:</p> <p>DATE:</p>	<p>REF. NUMBER: LAS55-100-5</p> <p>CONTRACT: STD</p>
X	±	0.50																												
X.X	±	0.1																												
X.XX	±	0.05																												
X.XXX	±	0.1																												
ANGULARITY	±	0.01																												
CONCENTRIC	±	0.05																												
ROUNDNESS	±	0.2 MAX																												
EDGE BREAK		0.2 MAX																												
CHAMFER		0.2 MAX																												
<p>SCALE: NONE</p> <p>DO NOT SCALE DWG</p>	<p>SPEC. NUMBERS:</p>	<p>PART NAME: LAS55-100-5X-1</p> <p>DATE: 09/09/03</p> <p>APPROVED BY:</p> <p>DATE:</p>	<p>SHEET NUMBER: 1 OF 1</p>																											

REV	DATE	ECN	DESCRIPTION	APP
C	3/3/05	3494	SEE *	SMH
D	1/21/16	5698	PART NUMBER CHANGE	SB