

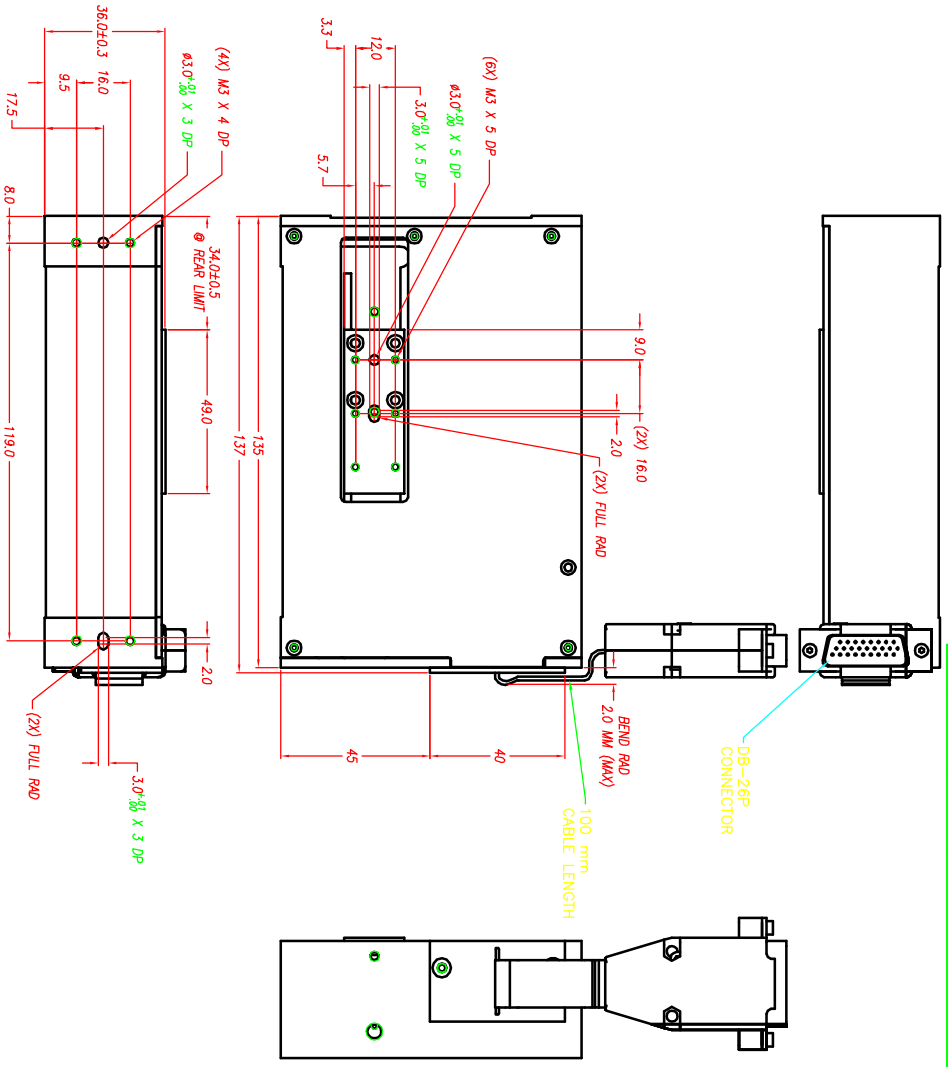
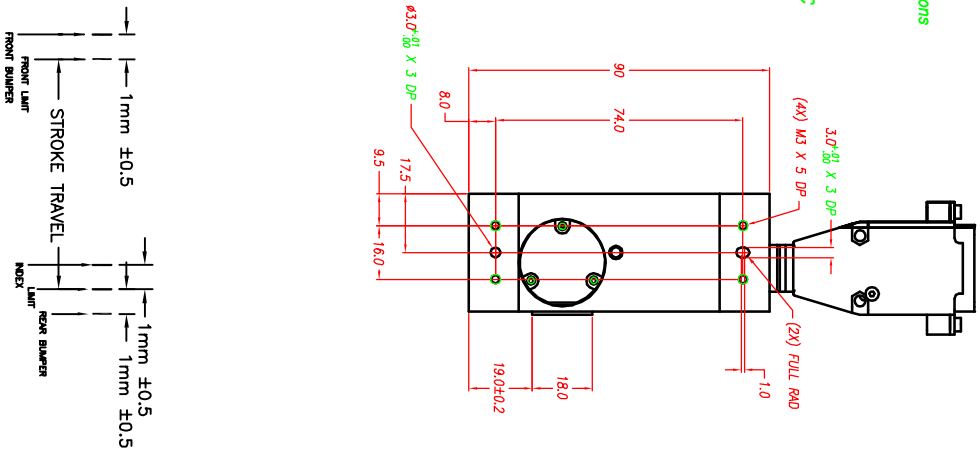
NOTES: (UNLESS OTHERWISE SPECIFIED)

1. ALL DIMENSIONS ARE IN mm OTHERWISE NOTED.
2. LINEAR SPECIFICATION:
 - LINEAR STROKE: 25 +1.0/-0 mm
 - FORCE CONSTANT: 15.5 N/A
 - PEAK FORCE: 35 N @ 2.9 A (24 VDC)
 - CONTINUE FORCE : 24 N @2 A (24 VDC)
 - COIL DC RESISTANCE: 7 Ω @ 22°C
 - COIL INDUCTANCE: 1.1 mH @ 1 kHz
 - ENCODER RESOLUTION: 0.5, 1.0, 5.0 Microns
 - ENCODER ACCURACY: ±25 Microns
3. MOVING MASS: .19 Kg
4. TOTAL MASS: 1.06 Kg
5. OPERATING TEMPERATURE: -10°C TO +65°C

SIGNATURE NEEDED FOR ORDER APPROVAL
 DATE _____
 APPROVAL NOT RECEIVED WITHIN _____
 48 HOURS MAY AFFECT DELIVERY

DB-26P PINOUT

1	(L) PH. A+
2	(L) PH. B+
3	(L) PH. Z+
4	NC
5	NC
6	V/O RIN
7	NC
8	NC
9	NC
10	(L) PH. A-
11	(L) PH. B-
12	(L) PH. Z-
13	NC
14	LIMIT +
15	LIMIT -
16	NC
17	NC
18	NC
19	+5VDC
20	5V RIN
21	(L) COIL +
22	(L) COIL -
23	(L) COIL -
24	(L) COIL -
25	NC
26	NC



REVISIONS

REV	DATE	ECN	DESCRIPTION	APP
B	1/26/16	5688	PART NUMBER CHANGE	SB

<p>TOLERANCES ARE:</p> <table border="1"> <tr><td>X</td><td>± 0.50</td></tr> <tr><td>X.X</td><td>± 0.1</td></tr> <tr><td>X.XX</td><td>± 0.05</td></tr> <tr><td>X.XXX</td><td>± 0.01</td></tr> <tr><td>ANGULARITY</td><td>± 0.1°</td></tr> <tr><td>CONCENTRIC</td><td>± 0.01</td></tr> <tr><td>ROUNDNESS</td><td>± 0.05</td></tr> <tr><td>EDGE BREAK</td><td>0.02 MAX</td></tr> <tr><td>CHAMFER</td><td>0.03 MAX</td></tr> </table>		X	± 0.50	X.X	± 0.1	X.XX	± 0.05	X.XXX	± 0.01	ANGULARITY	± 0.1°	CONCENTRIC	± 0.01	ROUNDNESS	± 0.05	EDGE BREAK	0.02 MAX	CHAMFER	0.03 MAX	<p>MATERIAL: ALUMINUM 6061-T6</p> <p>HEAT TREAT: R6</p> <p>MACHINE FINISH: DEEP</p> <p>EXCEPT NOTED: 1.6</p> <p>PROTECTIVE FINISH: ELECTROLESS NICKEL</p>	
X	± 0.50																				
X.X	± 0.1																				
X.XX	± 0.05																				
X.XXX	± 0.01																				
ANGULARITY	± 0.1°																				
CONCENTRIC	± 0.01																				
ROUNDNESS	± 0.05																				
EDGE BREAK	0.02 MAX																				
CHAMFER	0.03 MAX																				
<p>FILE NAME: LAS35-025-6-PIGTAIL</p>		<p>SCALE: NONE</p>																			
<p>DESIGNED BY: JEFF NGUYEN 3/15/05</p>		<p>CHECKED BY: DATE: _____</p>																			
<p>DRAWN BY: JEFF NGUYEN 3/15/05</p>		<p>APPROVED BY: DATE: _____</p>																			
<p>PART NAME: LAS35-025-7X-1 W/ PIGTAIL</p>		<p>REF. NUMBER: LAS35-025-6</p>																			
<p>CONTRACT: MOD900</p>		<p>SHEET NUMBER: 1 OF 1</p>																			
<p>REVISION: B</p>		<p>PART NUMBER: LAS35-025-7X-1</p>																			

SMAC