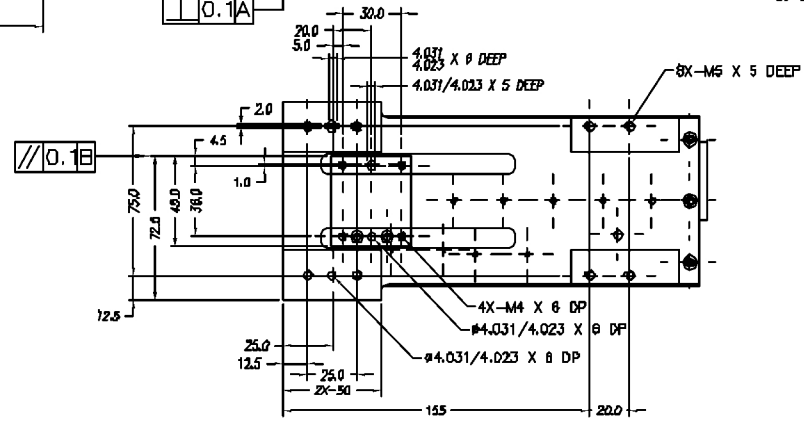
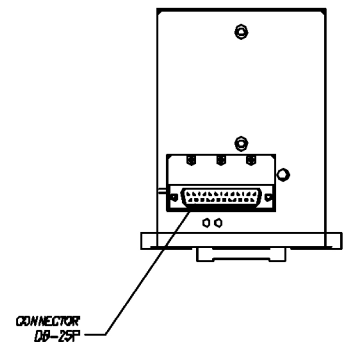
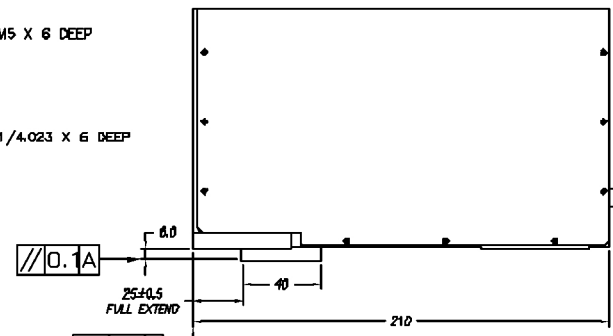
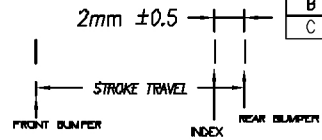
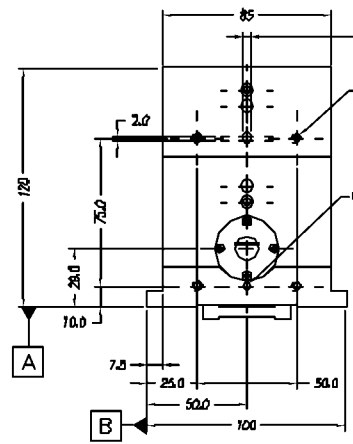


REVISIONS

REV	DATE	ECN	DESCRIPTION	APP
B	03/16/04	3070	RELEASE	TMV
C	1/21/16	5688	PART NUMBER CHANGE	SB

SIGNATURE NEEDED FOR ORDER APPROVAL  
 SIGN \_\_\_\_\_ DATE \_\_\_\_\_  
 APPROVAL NOT RECEIVED WITHIN  
 48 HOURS MAY AFFECT DELIVERY

- NOTES: (UNLESS OTHERWISE SPECIFIED)
- ALL DIMENSIONS ARE IN MM OTHERWISE NOTED.
  - ALL DIMENSION APPLY AFTER PLATING.
  - ACTUATOR LINEAR SPECIFICATIONS:  
 LINEAR STROKE: 50 +1/-0 mm  
 FORCE CONSTANT: 72 N/A  
 PEAK FORCE: 202 N @ 3 A (@48 VDC)  
 CONTINUOUS OPERATION 100% DUTY CYCLE: 144 N @ 2 A  
 COIL DC RESISTANCE: 14.5 Ω ±5% @ 22°C  
 LINEAR ENCODER RESOLUTION: 5 μm  
 ENCODER ACCURACY: ±20 μm  
 MOVING MASS: 0.56 Kg  
 TOTAL MASS: 7.4 Kg
  - OPERATING TEMPERATURE: 5°C TO +40°C



DB-25P PINOUT

1	+5VDC
2	+5V RETURN
3	NC
4	LINEAR PHASE A-
5	OVER HEAT
6	OVER HEAT RETURN
7	COIL +
8	COIL +
9	LINEAR PHASE B-
10	NC
11	NC
12	NC
13	NC
14	LINEAR PHASE A+
15	NC
16	LINEAR PHASE B+
17	NC
18	LINEAR INDEX +
19	COIL -
20	COIL -
21	NC
22	NC
23	LINEAR INDEX -
24	NC
25	NC

TOLERANCES ARE: X ± 0.50 X.X ± 0.1 X.XX ± 0.05 X.XXX ± ANGULARITY ± 0.1° CONCENTRIC ± 0.01 ROUNDNESS ± 0.05 EDGE BREAK 0.02 MAX CHAMFER 0.02 MAX	MATERIAL: ALUMINUM 6061-T6	DESIGNED BY: TOAN VU DATE: 03/16/04 DRAWN BY: TOAN VU DATE: 03/16/04		REF. NUMBER LAS300-050	
				HEAT TREAT: _____ PC _____ DEEP	
MACHINE FINISH: _____ 1.8/		PART NAME: LAS300-050-7X-2		SHEET NUMBER: 1 OF 1	
EXCEPT NOTED: _____ PROTECTIVE FINISH: ELECTROLESS NICKEL		SCALE: NONE DO NOT SCALE DWG	DWG SIZE: B	PART NUMBER: LAS300-050-7X-2	REVISION: C
FILE NAME: LAS300-050-8					

SMAC