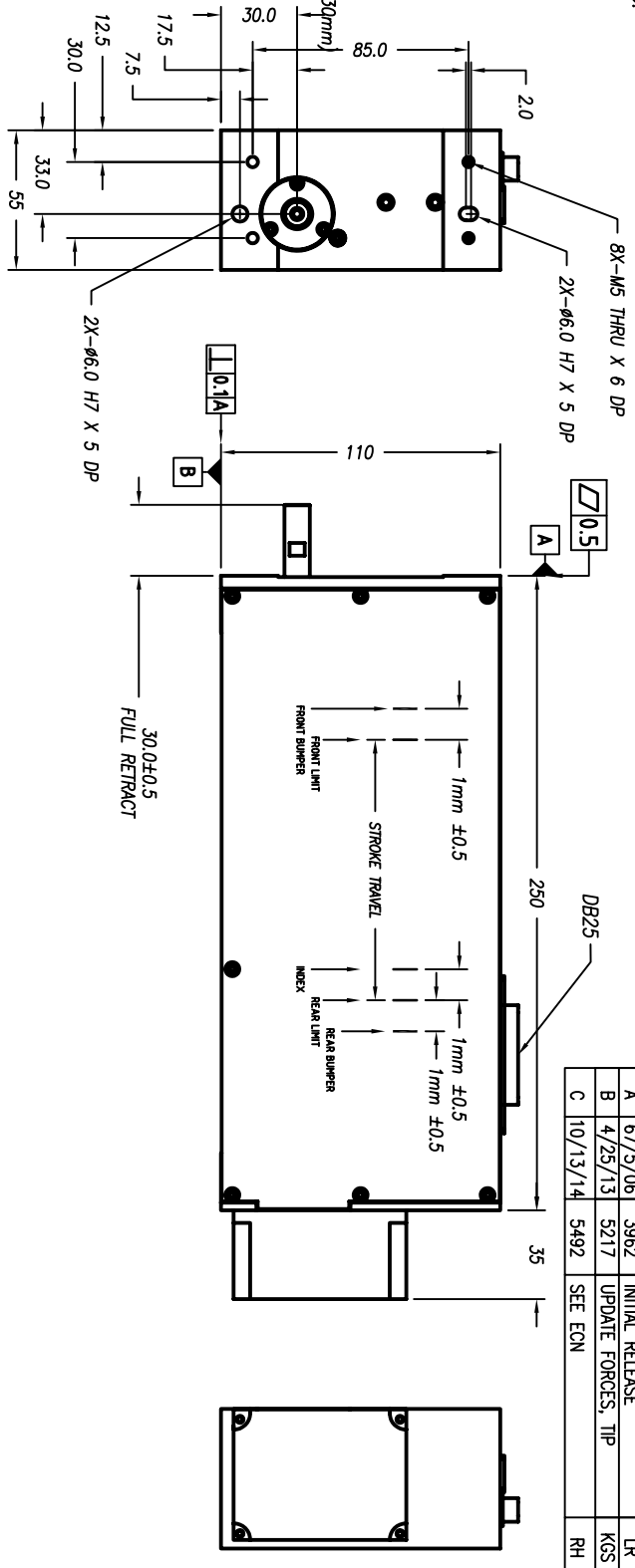


NOTES: (UNLESS OTHERWISE SPECIFIED)

1. ALL DIMENSIONS ARE IN MM UNLESS OTHERWISE NOTED.
2. ALL DIMENSIONS APPLY AFTER PLATING.
3. ACTUATOR SPECIFICATIONS:  
 LINEAR STROKE: 100.0 MM  
 FORCE CONSTANT: 13 N/AMP  
 PEAK FORCE: 25 N @ 2 AMPS (48 VDC)  
 COIL DC RESISTANCE: 24 OHMS @ 22°C  
 LINEAR ENCODER RESOLUTION: 0.1, 1.0 5.0UM  
 ENCODER ACCURACY: ±4 COUNTS  
 MOVING MASS: 300 GRAMS  
 TOTAL MASS: 3650 GRAMS  
 THEIA SPECIFICATION: (DIRECT OUTPUT SHAFT PITTMAN 30mm)  
 ROTATION ANGLE: 360° CONTINUOUS  
 PEAK TORQUE: 0.12 Nm (2.4 A, 48 VDC)  
 CONTINUOUS TORQUE: 0.036 Nm @ 0.79 A (48 VDC)  
 TORQUE CONSTANT: 0.054 Nm/A (48 VDC)  
 ROTARY MOTOR TYPE: DC BRUSH  
 ENCODER RESOLUTION: 2000 CPR  
 ENCODER ACCURACY: ± 5 COUNTS (0° BACK LASH)  
 OPERATING TEMPERATURE: -10°C TO +65°C



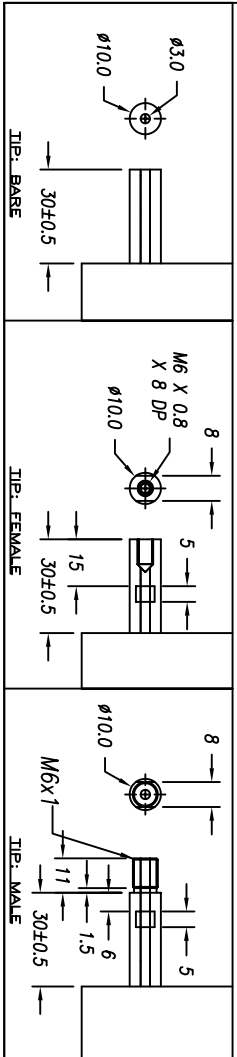
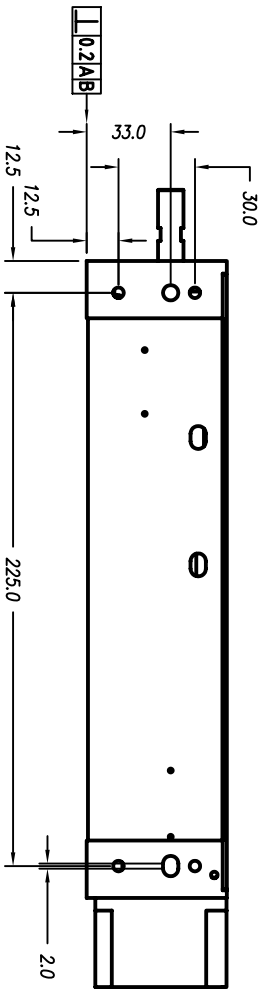
REVISIONS			
REV	DATE	ECN	DESCRIPTION
A	6/7/5/06	3962	INITIAL RELEASE
B	4/25/13	5217	UPDATE FORCES, TIP
C	10/13/14	5492	SEE ECN

1	+5VDC
2	+5V RETURN
3	ROTARY MOTOR-
4	LINEAR PHASE A-
5	NC
6	TBD
7	COIL +
8	COIL -
9	ROTARY PHASE B-
10	ROTARY MOTOR+
11	LIMIT + (TBD)
12	LIMIT - (TBD)
13	ROTARY PHASE B-

DB-25P PINOUT

14	LINEAR PHASE A+
15	ROTARY PHASE A+
16	LINEAR PHASE B+
17	ROTARY PHASE B+
18	LINEAR INDEX +
19	COIL -
20	COIL +
21	ROTARY PHASE A-
22	ROTARY COARSE INDEX
23	LINEAR INDEX -
24	ROTARY FINE INDEX
25	ROTARY FINE INDEX

SIGNATURE NEEDED FOR ORDER APPROVAL  
 SIGN \_\_\_\_\_ DATE \_\_\_\_\_  
 APPROVAL NOT RECEIVED WITHIN  
 48 HOURS MAY AFFECT DELIVERY



<p>FILE NAME: LAR55-100-7_B</p> <p>TOLEANCES ARE:                  X ± 0.50                  XX ± 0.1                  XXX ± 0.05                  XXXX ± 0.01                  ANGULARITY ± 0.1°                  CONCENTRIC ± 0.01                  ROUNDNESS ± 0.05                  EDGE BREAK 0.2 MAX                  CHAMFER 0.1 MAX</p>	<p>MATERIAL: ALUMINIUM 6061-T6</p> <p>HEAT TREAT: RC</p> <p>DEEP</p> <p>MACHINE FINISH: 1.6/</p> <p>EXCEPT NOTED</p> <p>PROTECTIVE FINISH: ELECTROLESS NICKEL</p> <p>SPEC. NUMBER:</p>	<p>DESIGNED BY: DAN VU</p> <p>DATE: 7/5/06</p> <p>DRAWN BY: RYAN HAGEN</p> <p>DATE: 10/13/14</p> <p>PART NAME: LAR55-100-7X-1</p>	<p>CHECKED BY:</p> <p>DATE:</p>	<p>REF. NUMBER: LAR55-100</p> <p>CONTRACT: STD</p> <p>SHEET NUMBER: 1 OF 1</p>
---	--	---	---------------------------------	--

SCALE: NONE	DWG SIZE: B	PART NUMBER: LAR55-100-7X-1	REVISION: C
-------------	-------------	-----------------------------	-------------