

NOTES: (UNLESS OTHERWISE SPECIFIED)

1. ALL DIMENSIONS ARE IN MM UNLESS OTHERWISE NOTED.
2. ALL DIMENSIONS APPLY AFTER PLATING.

3. ACTUATOR SPECIFICATIONS:

LINEAR STROKE: 50.0 MM
 FORCE CONSTANT: 19 N/AMP
 PEAK FORCE: 25 N @ 1.6 AMPS (24 VDC)
 COIL DC RESISTANCE: 15 OHMS @ 22°C
 COIL INDUCTANCE: TBD mH @ 1KHz
 MAXIMUM POWER DISSIPATE TO COIL: 32 WATTS
 LINEAR ENCODER RESOLUTION: 5, 1, 0.1 μM
 ENCODER ACCURACY: ±4 COUNTS
 MOVING MASS: 0.3 KG

TOTAL MASS: 2.9 KG

THETA SPECIFICATION: (PITTMAN 30mm)

ROTATION ANGLE: 360° CONTINUOUS

CONTINUOUS TORQUE: 0.036 Nm @ 0.79 A (24 DCV)

PEAK TORQUE: 0.080 Nm @ 1.70 A (24 DCV)

TORQUE CONSTANT: 0.054 Nm/A

GEAR RATIO: NONE (DIRECT DRIVE)

ROTARY MOTOR TYPE: DC BRUSH

ENCODER RESOLUTION: 2000 CPR

ENCODER ACCURACY: ± 5 COUNTS (0° BACK LASH)

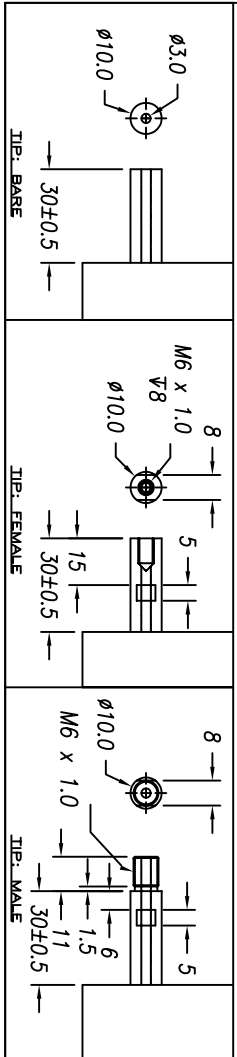
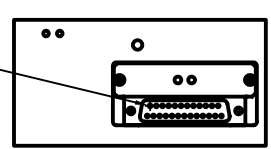
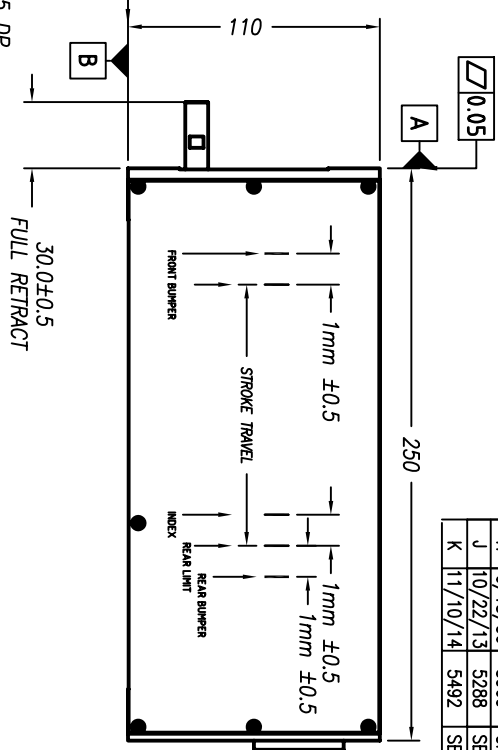
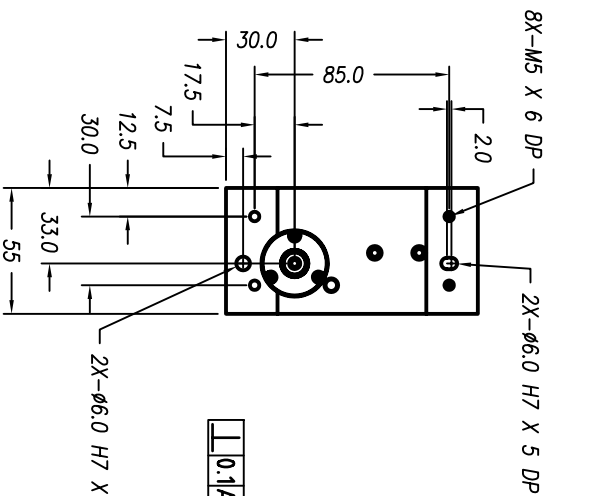
4. OPERATING TEMPERATURE: 0°C TO +65°C

DB-25P PINOUT

1	+5VDC
2	+5V RETURN
3	ROTARY MOTOR-
4	LINEAR PHASE A-
5	NC
6	TBD
7	COIL +
8	LINEAR PHASE B-
9	LINEAR PHASE B+
10	ROTARY MOTOR+
11	LIMIT + (TBD)
12	LIMIT - (TBD)
13	ROTARY PHASE B-

14	LINEAR PHASE A+
15	ROTARY PHASE A+
16	LINEAR PHASE B+
17	ROTARY PHASE B+
18	LINEAR INDEX +
19	COIL -
20	COIL -
21	ROTARY PHASE A-
22	ROTARY COARSE INDEX
23	LINEAR INDEX -
24	ROTARY FINE INDEX
25	ROTARY FINE INDEX

SIGNATURE NEEDED FOR ORDER APPROVAL
 SIGN _____ DATE _____
 APPROVAL NOT RECEIVED WITHIN
 48 HOURS MAY AFFECT DELIVERY



<p>TOOLERANCES ARE:</p> <table border="1"> <tr><td>X</td><td>± 0.50</td></tr> <tr><td>XX</td><td>± 0.1</td></tr> <tr><td>XXX</td><td>± 0.05</td></tr> <tr><td>XXXX</td><td>± 0.1</td></tr> <tr><td>ANGULARITY ±</td><td>0.01</td></tr> <tr><td>CONCENTRIC ±</td><td>0.05</td></tr> <tr><td>ROUNDNESS ±</td><td>0.2 MAX</td></tr> <tr><td>EDGE BREAK</td><td>0.1 MAX</td></tr> <tr><td>CHAMFER</td><td>0.1 MAX</td></tr> </table>		X	± 0.50	XX	± 0.1	XXX	± 0.05	XXXX	± 0.1	ANGULARITY ±	0.01	CONCENTRIC ±	0.05	ROUNDNESS ±	0.2 MAX	EDGE BREAK	0.1 MAX	CHAMFER	0.1 MAX	<p>MATERIAL: ALUMINUM 6061-T6</p> <p>HEAT TREAT: RC</p> <p>MACHINE FINISH: DEEP</p> <p>PROTECTIVE FINISH: EXCEPT NOTED</p> <p>ELECTROLESS NICKEL</p>	<p>DESIGNED BY: DAN VU</p> <p>DATE: 6/15/06</p> <p>CHECKED BY:</p>	<p>REF. NUMBER: LAR55-50-5X-1</p> <p>DATE:</p>
X	± 0.50																					
XX	± 0.1																					
XXX	± 0.05																					
XXXX	± 0.1																					
ANGULARITY ±	0.01																					
CONCENTRIC ±	0.05																					
ROUNDNESS ±	0.2 MAX																					
EDGE BREAK	0.1 MAX																					
CHAMFER	0.1 MAX																					
<p>FILE NAME: LAR55-50-5_K</p>	<p>EXCEPT NOTED</p>	<p>SCALE: NONE</p>	<p>CONTRACT: STD</p>																			
<p>SMAC</p>	<p>DATE: 10/22/13</p>	<p>DWG SIZE: B</p>	<p>SHEET NUMBER: 1 OF 1</p>																			
<p>REVISIONS</p>	<p>REVISION: K</p>	<p>PART NUMBER: LAR55-50-5X-1</p>	<p>REVISION: K</p>																			

REV	DATE	ECN	DESCRIPTION	APP
F	10/17/02	2326	SEE ECN	SMH
G	2/21/05	3502	SEE ECN	SMH
H	6/15/06	3960	CHANGE TO MAXON MTR	LR
J	10/22/13	5288	SEE ECN	KGS
K	11/10/14	5492	SEE ECN	RH